

The Distributor

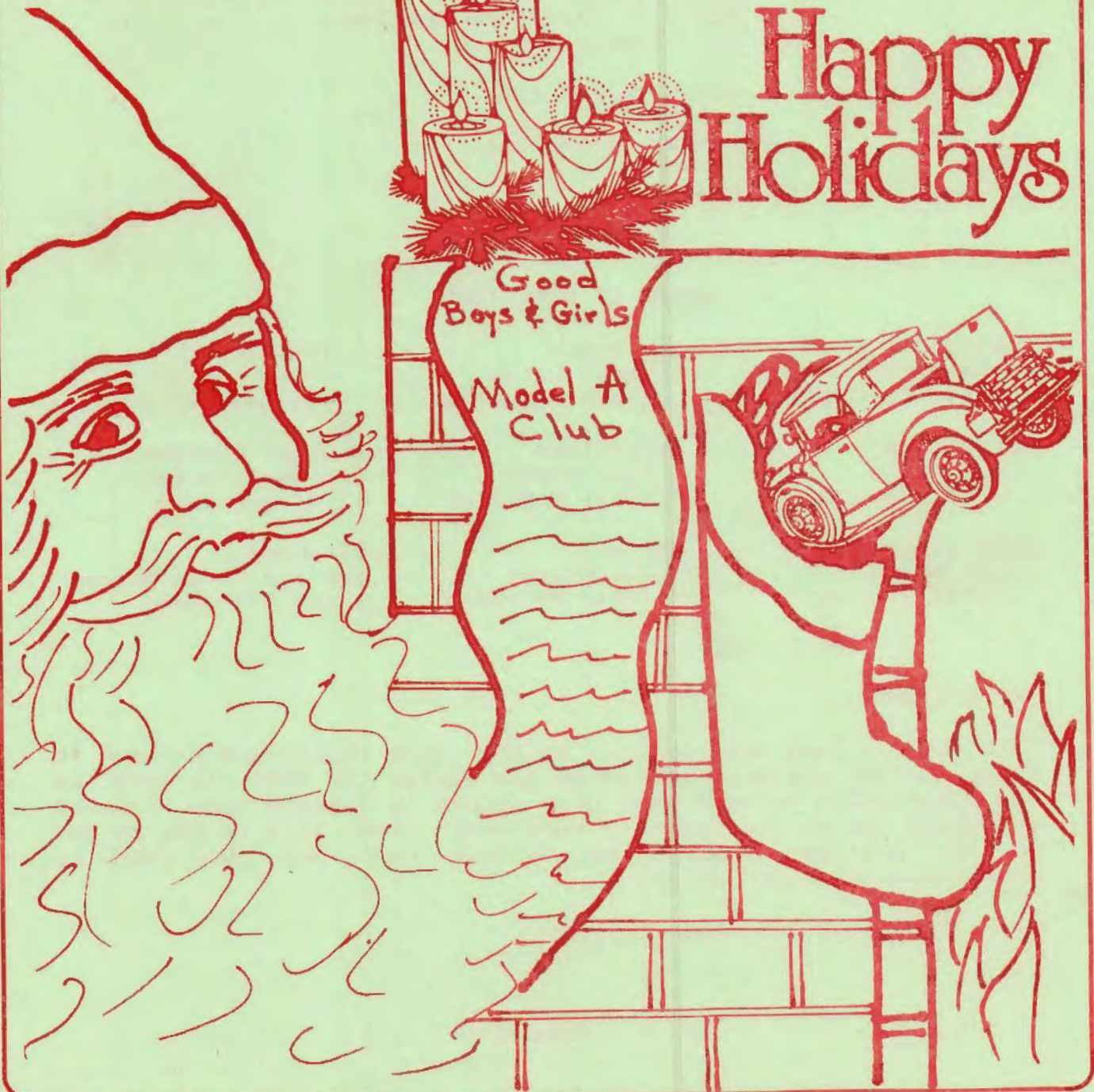
Orange County Model A Ford Club

VOLUME XXIX DECEMBER 1989
ISSUE 12

EDITOR: JIM KHALAF
PUBLISHERS: BOB & KARYN SITTER



Happy Holidays



TOURS. SPECIAL EVENTS, AND SWAP MEETS

December 3: Christmas Party - Sunday
 3: Pomona swap meet
 14: General Meeting / Family Xmas Party
 15: Christmas light tour
 21: Board Of Directors Meeting
 25: Christmas day

January 11: General Meeting
 18: Board Of Directors Meeting
 TBD: Bur temple tour

February 16-19: Death Valley tour

March 11: Pancake breakfast

August 12: Beach party

BOARD OF DIRECTORS

President Jim Marsh (714) 531-7237	Secretary Terry Lucas (714) 633-0390	Treasurer Bob Kelley (714) 642-4367
Activities Joe Wavra (714) 549-2881	Activities Paul Steed (714) 960-7381	Technical Advisor Lou Spielberger (714) 650-0974
Special Events Les White (714) 870-6417	Editor Jim Khalaf (714) 731-8064	Publishers Bob and Karen Sitter (714) 777-2486

Editors Note:

This is my last publication of the Distributor and I want to thank you for allowing me to be the editor in 1989. It gave me the opportunity to meet many good people in a short time. I would encourage you to volunteer to help your club. This is not to say that it will not take effort on your part, but what good is anything without any effort.

Merry Christmas and happy holidays...

MOOSE'S MESSAGE

Jim Marsh

Our first meeting at the new location is over and by the show of hands it appears that we all liked the room. The location is almost central to the membership (near Bristol and Santa Clara in Santa Ana). We will be meeting in this same location for the December meeting and Family Christmas Party. We will also book it up for all of next year's meetings with the exception of the summer meetings that will be at Hart Park. I would like to thank Martha White for finding us this fine location.

I would like to thank the 1989 board of directors for the outstanding job that they have done this year. We couldn't have made it without them. It was real pleasure working with them this year and this made my job that much easier. It takes a lot of work to keep our club moving and on an even keel. Everyone contributed willingly their time and effort. Thanks a lot, one and all!

As we move into the next decade, there are a few items of business that I did not get done, but, we will pass them on to the 1990 board of directors to work on. They will need something to do in January.

As this is the last issue of the distributor for the year, I would like to take this opportunity to wish each and every one of you and your

family, a very Merry Christmas and a most Happy and Prosperous New Year.



THE END

SOMETHING SPECIAL

Les White

I would like to thank everyone who helped support the club by having their car or truck in a car show this year. We had five events this year, and for me, this was very special.

The mall show at Buena Park looks very promising for next year. The event should occur around Father's Day and I feel it should be a very big event.

Whoever takes over the position of Special Events next year, I know will have an enjoyable time as I did these past 2 years.

I hope that more of you, our members will begin the new year by bringing your cars to these shows, and will continue to throughout the year. Please, help out your new Special Events Chairman.

I also hope that more of you will, at the meetings, sign up for these shows. It is more

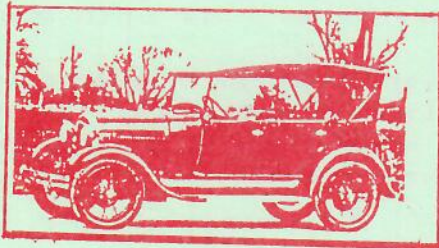
helpful if you do, not to mention less expensive to for the club. It is enough to make a phone calls to make final arrangements, but the job becomes real work when your Chairperson has to call and plead for cars. The club does have to pay for this added expense.

It is our club income, please try to help out, if there is even the slightest chance you can make it to an event sign up. Your new Chairman will need extra names on his lists so please don't assume he has enough or can get more.

Thanks again to all of you who have helped these last two year. Have a great Christmas!! See you at the Christmas Party and the next meeting.

ON THE ROAD AGAIN

Paul Steed & Joe Wavra



Sunday November 12th was a perfect Southern California day. The McKinneys, Rhias, Kelleys, Hanoses, Willetts, Wavras, along with Merle and Brian were in attendance for a 90 mile mystery of a tour. An enjoyable time was had by all

and the A's performed well.

There will be a Christmas light tour leaving from Jim and Bev Marsh's home on Friday the 15th at 7 PM sharp. This is always an enjoyable tour to attend.

1989 is just about over and a new year is just around the bend. We sincerely hope those of you who went on tour with us enjoyed it as much as we did. Hope to see you on tour in 1990.

DEATH VALLEY TOUR

Don't forget the Death Valley tour February 16-19. All clubs are welcome to join us. There are many thing to see and do and you will have a good time.

GENERAL MEETING

Martha White

We have a very special party for this year. The annual children's Christmas party is now called the Family Christmas Party for a very good reason!! We are gearing this party for appeal to BOTH adults and children.

Our club will be entertained by an excellent professional magician this year, who is guaranteed to astound both young and old.

Refreshments will be served after the entertainment.

Everyone please join us.

We will again have a professional Santa for the younger children at the end of the program. Thank you, Linda Tune for locating him for us. So parents please bring a warped gift valued no more than \$5.00 for your child or grandchild. We don't want to disappoint any children.

We want to encourage all of you to join us at our first Family Christmas Party. Please come and bring a friend, grandchild, grandparent, and please be prompt (early) for this meeting.

See you all there !!!!!

LET'S GET TECHNICAL

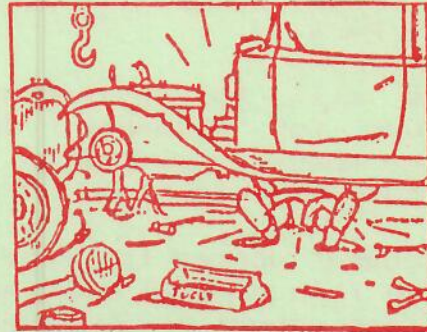
Lou Spielberger

1989 has been a fun year for me and thanks to all of you who attended the seminars and made them successful. A special thanks to Bob Ferazzi, Terry Lucas, Bob Kelly, Wade Roberts for use of their homes and Dennis Griffin, Jim Manos, and many more who helped make the seminars interesting.

The ladies enjoyed the seminars too. They worked on crafts and made many beautiful things.

Happy Holidays.

A TIP FROM LOU



More tidbits in Lou of Lou's tips.

- Beauty is only skin deep, but ugly goes clear to the bone.
- Behind every argument is someone's ignorance.
- Between two evils, I always pick the one I never tried before.
- God gives us relatives, thank god we can chose our friends.
- Happiness is just an illusion, filled with sadness and confusion.

BOARD MEETING

The meeting was called to order at 7:50 PM. The secretary and treasurer's reports were approved as read.

Paul Steed and Joe Wavra reported on upcoming events which included: December 3rd the adult Christmas party, December 14th the Family Christmas party immediately following the General Meeting, December 15th is the Christmas light tour. Dianne Manos volunteered to setup a tour for the Ruda Temple in Hacienda Heights, February 16-19 is the Death Valley tour,

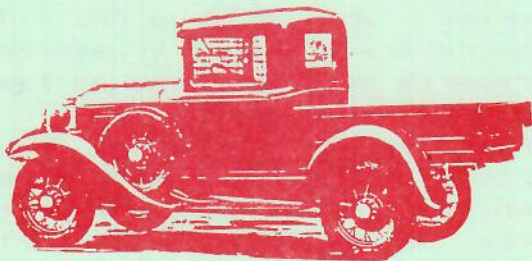
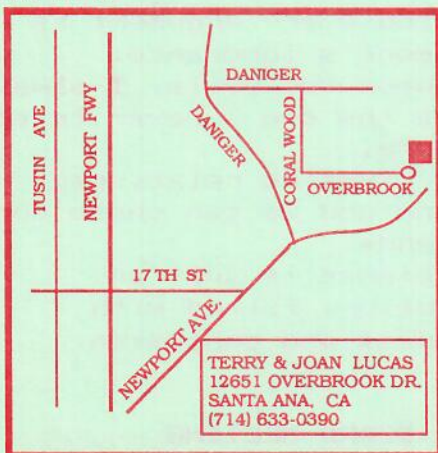
March 11th is the pancake breakfast and August 12th is the beach party at Doheny State Park.

There will be no technical seminar for December. There are no special events on the calendar at this time.

The board agreed to continue having it's general meeting at Santiago school in Santa Ana.

The next board meeting will be held on December 21st at 7:30 at the Lucas's home.

The meeting was adjourned at 9:15 PM.



FOR SALE

1946 Merc - 2 door

Price - \$1,500

Call Norm Saunders

(714) 859-0282

- N.O.S. "C" head - \$75
- Set mint restored closed car windwings, no glass - \$40
- 2 rebuild distributors \$40 ea
- '29 steering column, complete with replated spark and throttle arms \$25

Call Terry Lucas
(717) 633-0390

WANTED

- Zenith 1 carb
- Enclosed car trailer

Call Terry Lucas
(717) 633-0390

Running driveable Model A. Prefer sedan but will consider all. No show cars please.

Call Don Tune
(714) 896-3833 days
(714) 832-8239 eve & weekends

MEMBERSHIP DUES !

It's time of the year to update your 1990 membership and dues. The new Editor of the Distributor (Martha White) has the 1990 roster keyed into the computer and is waiting for the membership renewals.

Please fill the form and return it to Bob Kelley. If you have any question regarding membership, please call Bob at 642-4367. Thank you.

CHARMING STYLE and Priced so Low!

I know you will all be delighted with this 1927 spring and summer line I have selected for you. These new hats are beautiful, the smartest assortment I have ever assembled. And the prices! You will hardly believe your eyes! You, no doubt, have impressions of values in millinery, but when you see the stunning latest style hats we are offering you this season you will be really amazed. Only Sears, Roebuck and Co., could give such high quality materials and full selections of fashionable colors in the many head sizes at the low prices you will find quoted in these 17 pages. From the vast offerings of the world's greatest makers, I selected models for all types, from the very little girls to women of mature years, so every one of you will be immensely pleased, I am sure.

A Lines

Pauline

America's Best Known Milliner



— and only **\$3⁴⁸!**

Makes a charming picture, does it not? And we guarantee that the quality, workmanship and materials throughout will satisfy the most discriminating.

We invite comparisons with hats selling elsewhere at prices far, far above our price. The graceful wide brim shape (14 $\frac{3}{4}$ inches across) is of fine quality imported piping straw braid. This braid makes that very rich looking glossy hat. Trimmed handsomely with wide, high grade crepe satin ribbon, expertly draped. Stunning, huge, flat rose of novelty pattern made of sheer organdy and shaded Rayon plush. Trim is finished by a clever double strand silverlike cord across the front. Fitted with attractive silk lining. Especially designed for the stylish young woman and miss. In two head sizes.

Colors: Black with shaded tiger lily (new salmon shade) flower or black with shaded rose-pink color flower. Measure and state color. Shipping weight, 2 $\frac{3}{4}$ pounds.

78H9002—This fits 21 $\frac{1}{4}$ to 22 inches head size. **\$3.48**

78H9003—This fits 22 $\frac{1}{4}$ to 23 inches head size. **3.48**

It Is Easy to Measure Your Headsize—See Page 72



78H8005

\$2⁹⁸ This fits from 21 $\frac{1}{4}$ to 21 $\frac{3}{4}$ inches head size.

Colors: French beige (sand), Copenhagen blue, gooseberry (light) green or black. Measure and state color. Shipping wt., 1 $\frac{1}{2}$ lbs.

Draped toque crown is a popular style this season. Very smart and unusually becoming to small features. Made of fine quality Rayon faille. Several rows of rich looking ribbon, having metallic border, give a striking two-tone effect. Ribbon also binds brim and sets off odd, self wing design at side. Brilliant, brooch style trimming pin. Silk lined.

Rayon is the Trade Name for Artificial Silk



78H9007—Medium size. Fits 21 $\frac{1}{2}$ to 22 inches head size. **\$2⁹⁸**

Colors: Orchid (lavender), cameo pink (light), Copenhagen blue or wild honey (light brown). Measure and state color. Shipping weight, 1 $\frac{1}{4}$ pounds.

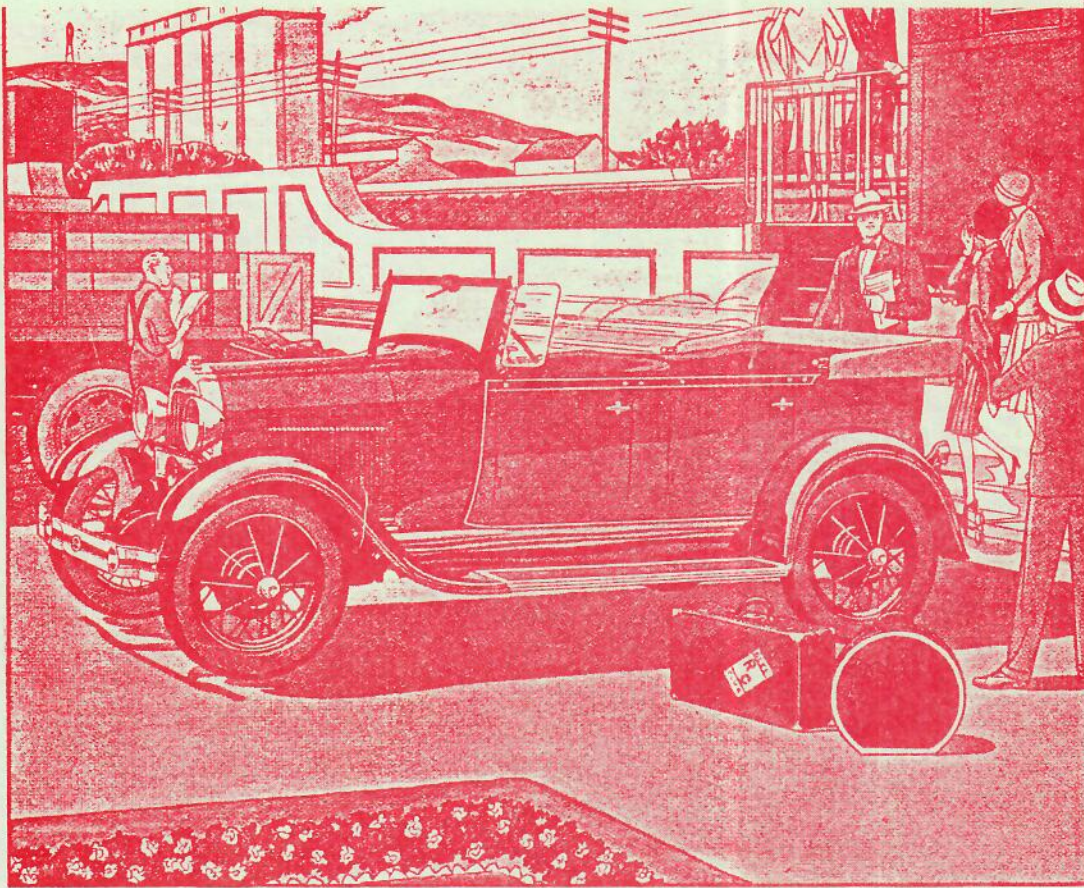
Daintiest of this summer's styles are made of transparent braid. This lovely new shape is of very fine genuine Swiss hair braid. Stylish, close fitting brim, with close roll at back, has facing of good quality silk crepe de chine. Fine, novelty flower appliques form an attractive trimming across front. Note clever dent across crown, 'tis very smart indeed.

78H8009—Small size. Fits from 21 to 21 $\frac{3}{4}$ inches head size. **\$1⁹⁸**

Colors: Gooseberry (light) green, French beige (sand), briar rose (new rose color), bright red or black. Measure and state color. Shipping weight, 1 $\frac{1}{4}$ pounds.

One of our smartest tailored models and a feature value. Chic New Yorkers are wearing this new tam style, which adapts itself handsomely in this fine soft quality Jap Swiss hemp straw braid. Good looking trimming of grosgrain ribbon, set off with odd little straw ornaments. Neat, tailored binding along brim edge. Silk lined.

We Guarantee to Satisfy You and Save You Money



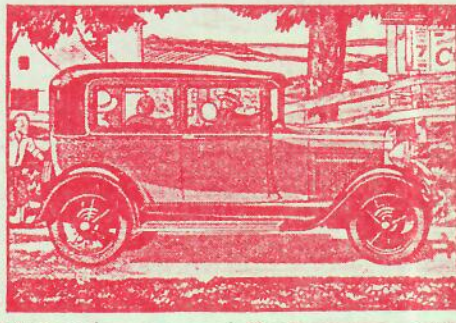
The new Ford has a very simple and effective lubrication system

IF YOU could look into the engine of the new Ford, you would be surprised at the simplicity of the lubrication system. It is a combination of pump, splash and gravity feed—an exclusive Ford development and unusually effective.

The oil pump draws the oil from the bottom of the oil pan through a fine mesh wire screen or filter and delivers it quickly to the valve chamber. Even when you are traveling at thirty miles an hour, the five quarts of oil in the pan pass through the pump *twice* in every mile.

From the valve chamber the oil flows by gravity to the main bearings of the crankshaft and front camshaft bearing. Reservoirs of oil are provided for each main bearing pipe opening through a series of ingenious dams at the bottom of the valve chamber.

After filling these reservoirs, the surplus oil flows down an overflow pipe to the front of the oil pan tray. In this tray are four troughs into which dip the scoops on the connecting rods. These scoops pick up the oil and throw it into the grooves of the



swiftly moving crankpin bearings. They also send an oil spray over the cylinder walls, camshaft and timing gears. From the tray the oil flows back to the oil pan, whence it is again drawn through the oil strainer into the pump.

The only movable part in the entire Ford engine lubrication system is the oil pump. From valve chamber down, the entire flow of oil is an easy, natural flow—as simple in principle as water running down-hill.

There is only one thing for you to do, but that is a very important thing . . .

All of the new Ford cars are finished in a choice of colors. Other features include four Houdaille hydraulic two-way shock absorbers, Triplex shatter-proof glass windshield, silent, fully enclosed six-brake system, theft-proof coincidental ignition lock, typical Ford reliability, economy and long life.

watch the oil. Keep enough oil in the oil pan so that the indicator rod never registers below low (L) and change the oil every 500 miles.

The lubrication of the chassis is likewise important. It has been made easy in the new Ford by the Alemite high pressure gun system. For best performance, the chassis should be lubricated every 500 miles.

Every 2000 miles the distributor cam should be cleaned and given a light film of vaseline. At 5000 miles, the lubricant in the differential and transmission should be drained, the housings flushed and new lubricant added.

Lubrication means so much to economical, satisfactory performance that it ought not to be neglected. Have your car attended to regularly. Your Ford dealer is best equipped to do this work.



FORD MOTOR COMPANY
Detroit, Michigan

ORANGE COUNTY MODEL A FORD CLUB

Roster and Dues Confirmation Information

Club dues are due and payable at the November club meeting. This form may be either turned in at any preceding meeting (with check or money order) or mailed to: Orange County Model A Ford Club, P.O. Box 10595, Santa Ana, Ca. 92711. Early payment will ensure no delay in receiving your RESTORER. It is also critical that your club dues be received promptly, as the club roster cannot be printed until the membership renewals are received. THIS FORM MUST BE SUBMITTED WITH YOUR MEMBERSHIP RENEWAL, completed in full.

NAME: _____
 LAST HUSBAND WIFE

CHECK ONE: _____ FAMILY MEMBERS: _____
 NEW MEMBER _____
 RETURNING MEMBER _____
 YEAR FIRST JOINED THE CLUB _____

NOTE: CIRCLE ANY NEW ADDRESS OR PHONE INFO.

ADDRESS: _____

ZIP CODE: _____ TELEPHONE _____

MODEL A - YEAR AND BODY STYLE CAR'S NAME

Dues paid prior to January need to be mailed to the club post office box or given to the treasurer. The dues breakdown is as follows:

National Dues	\$20.00
Local Dues	\$15.00
ACCC Dues	\$ 2.00
Total	<u>\$37.00</u>

If you "showed" your car at the mall show in 1989, your dues will be \$27.00 for the year.

FOR OFFICE USE

Date Dues Paid _____

By: _____

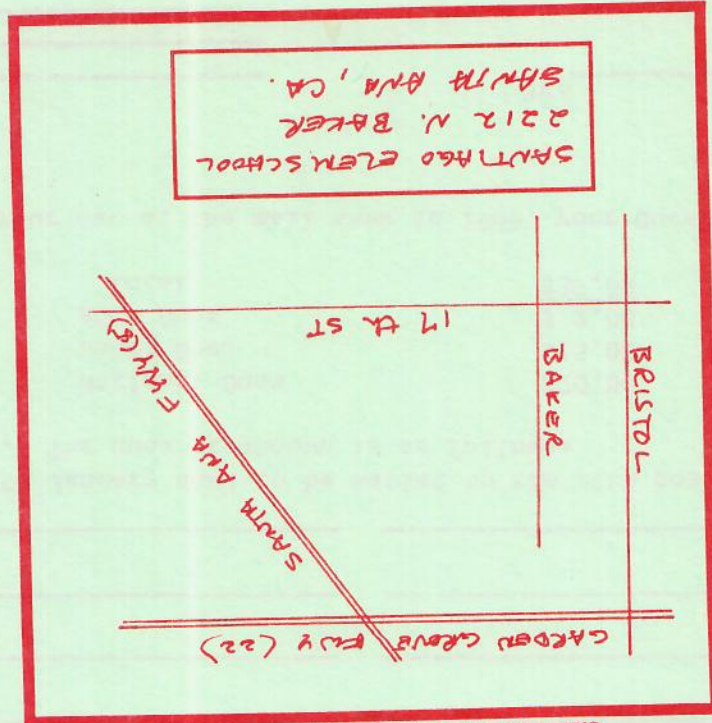
Amount _____

Cash/Check No.: _____

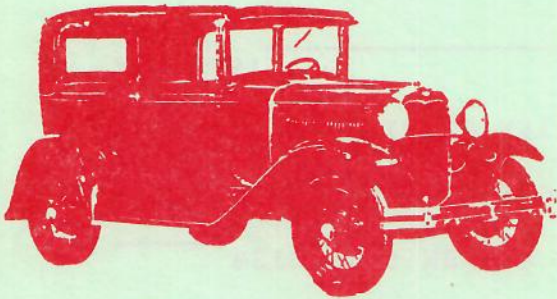
Roster List: _____

Update in Distributor: _____

Date National Notification Mailed: _____



GENERAL MEETING LOCATION



**MAFCA
ORANGE COUNTY CHAPTER
POST OFFICE BOX 10595
SANTA ANA, CA 92711**

First Class Mail